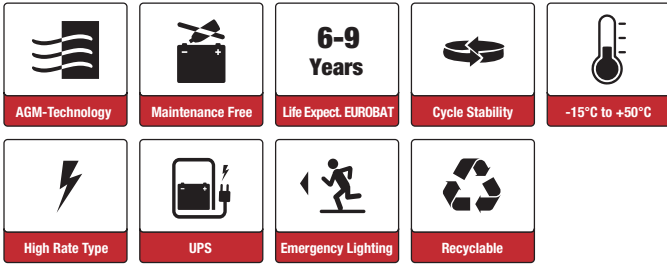




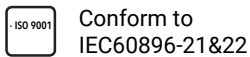
# SBH190-12 (12V188W)



## Applications

- Uninterruptable Power Supply (UPS)
- Electric Power System (EPS)
- Emergency backup power supply
- Emergency light
- Railway signal
- Alarm and security system
- Communication power supply
- DC power supply

## Certificates



## Specifications

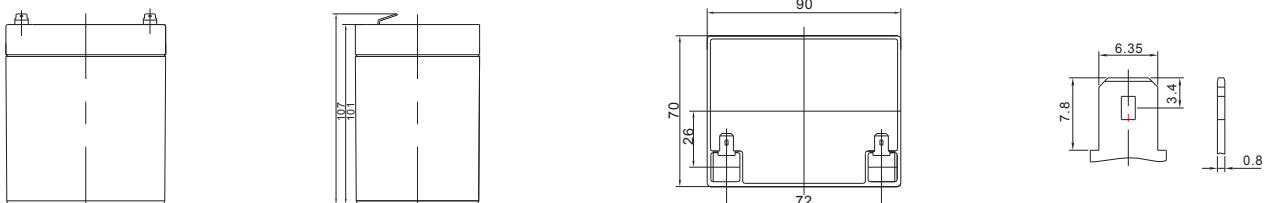
<b>Nominal Voltage</b>	12V	<b>Operating Temp. Range</b>	Discharge: -20~50°C
<b>Nominal Capacity</b>	5.1Ah (C <sub>10</sub> , 9.6V) 5.5Ah (C <sub>20</sub> , 9.6V)		Charge: -10~50°C
<b>Approx. Weight</b>	1.55kg		Storage: -20~50°C
<b>Terminal</b>	T2	<b>Cycle Use</b>	Initial Charging Current less than 1.65A. Voltage 14.7V +0.1V at 20°C. Temperature Coefficient -30mV/°C.
<b>Container Material</b>	ABS UL94 HB	<b>Standby Use</b>	No limit on Initial Charging Current. Voltage 13.7V +0.1V at 20°C. Temperature Coefficient -20mV/°C.
<b>Nominal Power</b>	5 min 271.92W (20°C / 9.6V/Block) 10 min 187.56W 15 min 139.68W	<b>Capacity affected by Temp.</b>	40°C 103% 25°C 100% 0°C 86%
<b>Nominal Power</b>	5 min 45.32W (20°C / 1.6V/Cell) 10 min 31.26W 15 min 23.28W	<b>Self Discharge</b>	SSB batteries may be stored for up to 6 months at 20°C and then a freshening charge is required. For higher temperatures the time interval will be shorter.
<b>Max. Discharge Current</b>	55A (5s)	<b>Life Expectancy</b>	6-9 years according to EUROBAT
<b>Internal Resistance / Impedance (1kHz)</b>	Approx. 30mΩ		
<b>Nominal Oper. Temp. R.</b>	20±3°C		



## Dimensions

### ■ T2 Terminal

Unit: mm | Dimensions: 90 Length X 70 Width X 101 Height (107 Height incl. Terminal)



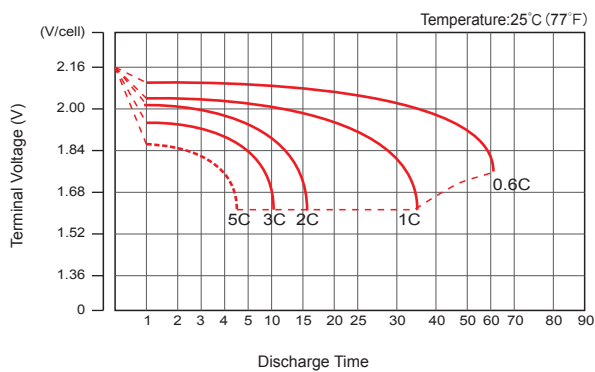
### Constant Current Discharge (Amperes) at 20°C

F.V/Time	3min	5min	8min	10min	15min	20min	30min	60min	90min
9.6V	28.69	25.22	20.15	17.27	12.74	10.01	7.136	4.002	2.837
10.0V	26.03	22.88	18.43	15.92	11.92	9.453	6.762	3.814	2.715
10.2V	24.91	21.90	17.69	15.34	11.55	9.201	6.594	3.731	2.665
10.5V	23.07	20.28	16.48	14.38	10.91	8.742	6.319	3.606	2.584
10.8V	21.13	18.58	15.24	13.41	10.36	8.330	6.043	3.470	2.492
11.1V	18.07	15.88	12.98	11.39	8.88	7.235	5.344	3.137	2.280

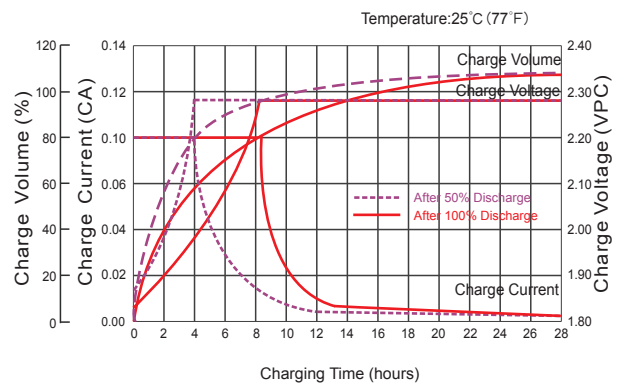
### Constant Power Discharge (Watts/cell) at 20°C

F.V/Time	3min	5min	8min	10min	15min	20min	30min	60min	90min
9.6V	309.3	271.9	218.0	187.6	139.68	110.64	79.1	45.02	32.22
10.0V	284.2	249.8	202.1	175.4	132.0	105.60	76.2	43.33	31.12
10.2V	274.4	241.2	195.6	170.2	129.24	103.32	74.4	42.64	30.64
10.5V	256.6	225.6	184.3	161.5	123.18	99.42	72.1	41.45	29.85
10.8V	238.3	209.5	172.4	152.3	117.72	95.46	69.7	40.27	29.06
11.1V	207.1	182.0	148.9	130.9	102.3	83.70	62.0	36.64	26.69

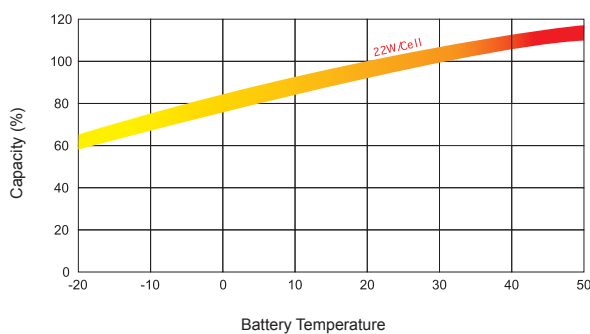
### Discharge Characteristics



### Float Charging Characteristics



### Temperature Effects in Relation to Battery Capacity



### Effect of Temperature on Long Term Float Life

