



SSB SBL 41-12HR (12V 187W)



Specification		
Nominal Voltage	12V	
Nominal Capacity (10hr / 20°C / 1.80 V/C)	187W	
	20 hour rate	33.0Ah
	10 hour rate	31.2Ah
Internal Resistance	Fully Charged battery 68°F(20°C) ≤9 mOhms	
Self-Discharge	3% of capacity declined per month at 20°C (average)	
Dimension	SSB series batteries may be stored for up to 6 months at 68°F(20°C) and then a freshening charge is required. For higher temperatures the time interval will be shorter.	
	Length (mm / inch)	195 / 7.68
	Width (mm / inch)	130 / 5.12
	Height (mm / inch)	155 / 6.10
	Total Height (mm / inch)	168 / 6.61
Approx. Weight (Kg / lbs)	10.2 / 22.5	
Operating Temperature Range (temporarily – see our manual)	Discharge : -20~50°C	
	Charge : -10~50°C	
	Storage : -20~50°C	
Max. Discharge Current 68°F(20°C)	330A(5s)	
Short Circuit Current	930A	
Charge Methods: Constant Voltage Charge 68°F(20°C)	Cycle use	2.40-2.45VPC
	Maximum charging current	12.0A
	Temperature compensation	-30mV/°C
	Standby use	2.20-2.28VPC
	Temperature compensation	-20mV/°C
Life expectancy	10~12 years at 20°C with charge voltage 2.25V/cell	

Applications

- ◆ Absorbent Glass Mat (AGM) technology for efficient gas recombination of up to 99% and freedom from electrolyte maintenance or water adding.
- ◆ Not restricted for air transport-complies with IATA/ICAO Special Provision A67.
- ◆ UL-recognized component.
- ◆ Can be mounted in any orientation.
- ◆ Computer designed lead, calcium tin alloy grid for high power density.
- ◆ Long service life, float or cyclic applications.
- ◆ Maintenance-free operation.
- ◆ Low self discharge.
- ◆ Case and cover available in both standard and flame retardant ABS.



Conform to:
IEC60896-21&22 and/or IEC61427

Discharge Constant Current (Amperes at 68°F20°C)

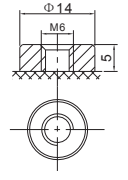
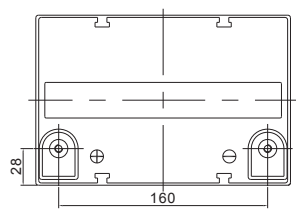
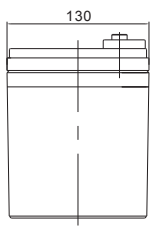
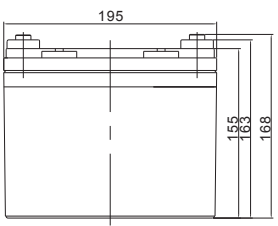
End Point Volts/Cell	5min	8min	10min	15min	20min	30min	60min	90min
1.60V	116.7	99.9	89.8	71.4	57.3	42.0	24.2	17.9
1.65V	107.9	93.7	84.3	67.7	53.5	40.1	23.0	17.0
1.70V	103.5	90.4	81.3	65.6	51.4	38.9	22.4	16.5
1.75V	97.7	85.9	76.3	62.5	50.0	37.8	22.0	16.2
1.80V	91.9	81.4	71.3	59.4	48.6	36.7	21.6	15.8
1.85V	85.8	76.5	66.1	56.0	46.9	35.3	21.0	15.3

Discharge Constant Current (Watts at 68°F20°C)

End Point Volts/Cell	5min	8min	10min	15min	20min	30min	60min	90min
1.60V	208	181	164	131	105	77.4	44.7	33.2
1.65V	194	171	155	125	99.3	74.5	43.0	31.9
1.70V	189	167	151	123	96.6	73.3	42.3	31.3
1.75V	180	161	144	118	95.1	72.1	42.1	31.0
1.80V	172	155	136	114	93.7	70.9	41.9	30.7
1.85V	164	148	129	110	92.2	69.7	41.7	30.4

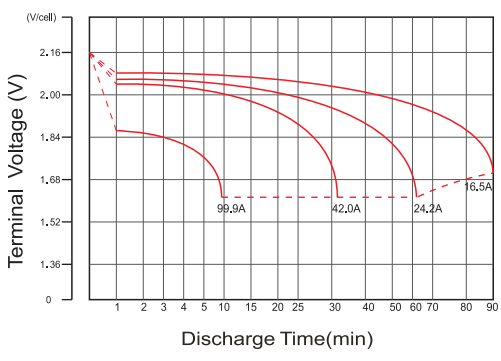


Dimensions

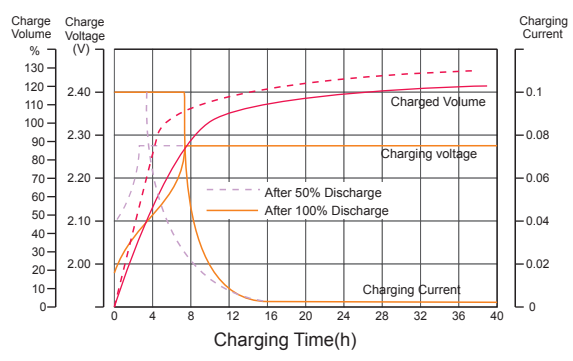


F11 TERMINAL

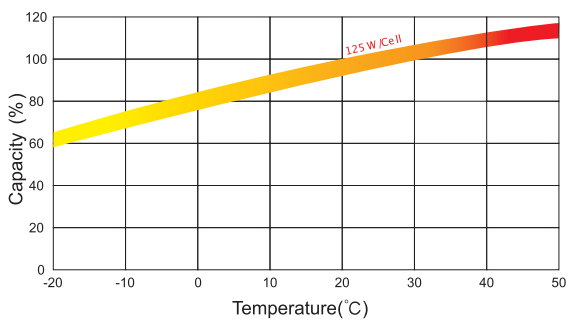
Discharge Characteristics



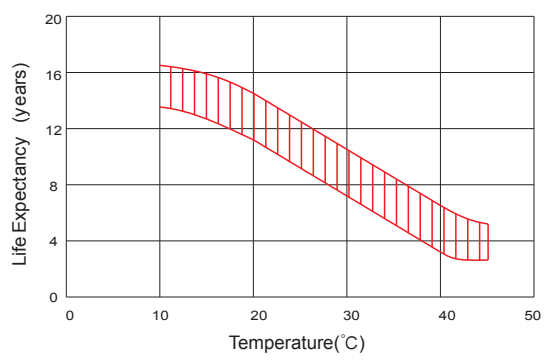
Float Charging Characteristics



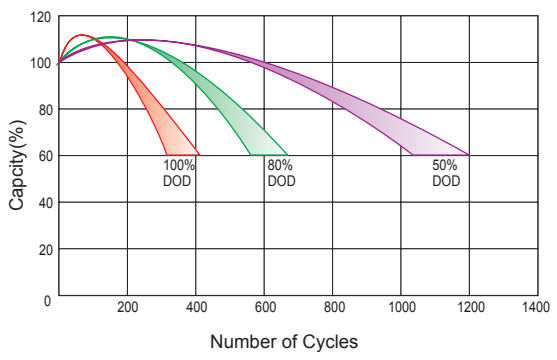
Temperature Effects in Relation to Battery Capacity



Effect of Temperature on Long Term Float Life



Cycle Life in Relation to Depth of Discharge



Self Discharge Characteristics

