



SSB SBL 225-12HR (12V 974W)



Specification	
Nominal Voltage	12V
Nominal Capacity (10hr / 20°C / 1.80 V/C)	974W
	20 hour rate 200.0Ah
	10 hour rate 190.0Ah
Internal Resistance	Fully Charged battery 68°F(20°C) ≤3.6 mOhms
Self-Discharge	3% of capacity declined per month at 20°C (average)
	SSB series batteries may be stored for up to 6 months at 68°F(20°C) and then a freshening charge is required. For higher temperatures the time interval will be shorter.
Dimension	Length (mm / inch) 522 / 20.6 Width (mm / inch) 240 / 9.45 Height (mm / inch) 219 / 8.62 Total Height (mm / inch) 224 / 8.82
Approx. Weight (Kg / lbs)	63.5 / 140.0
Operating Temperature Range (temporarily – see our manual)	Discharge : -20~60°C Charge : -0~50°C Storage : -20~60°C
Max. Discharge Current 68°F(20°C)	2000A(5s)
Short Circuit Current	3850A
Charge Methods: Constant Voltage Charge 68°F(20°C)	Cycle use 2.30-2.35VPC Maximum charging current 0.96A Temperature compensation -3mV/°C Standby use 2.23-2.275VPC Temperature compensation -4mV/°C
Life expectancy	10~12 years at 20°C with charge voltage 2.25V/cell

Applications

- ◆ Absorbent Glass Mat (AGM) technology for efficient gas recombination of up to 99% and freedom from electrolyte maintenance or water adding.
- ◆ Not restricted for air transport-complies with IATA/ICAO Special Provision A67.
- ◆ UL-recognized component.
- ◆ Can be mounted in any orientation.
- ◆ Computer designed lead, calcium tin alloy grid for high power density.
- ◆ Long service life, float or cyclic applications.
- ◆ Maintenance-free operation.
- ◆ Low self discharge.
- ◆ Case and cover available in both standard and flame retardant ABS.



Conform to:
IEC60896-21&22 and/or IEC61427

Discharge Constant Current (Amperes at 68°F20°C)

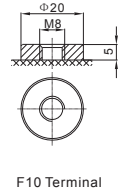
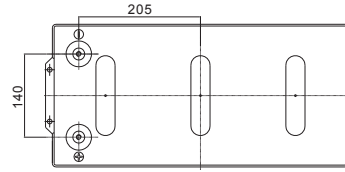
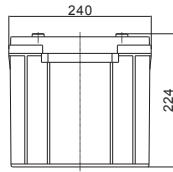
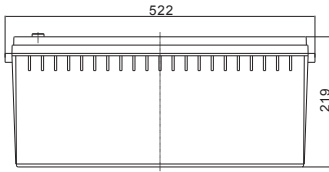
End Point Volts/Cell	5min	8min	10min	15min	20min	30min	60min	90min
1.60V	707.0	587.8	518.6	400.9	327.8	349.7	152.5	114.2
1.65V	654.2	551.4	486.6	380.0	305.8	238.1	145.4	108.7
1.70V	627.0	532.0	469.0	368.3	294.1	231.3	141.2	105.4
1.75V	592.2	505.4	440.4	351.0	286.1	224.8	138.9	103.1
1.80V	557.0	478.8	411.6	333.5	277.6	217.9	136.1	100.6
1.85V	519.8	450.2	381.6	314.5	267.9	209.9	132.9	97.5

Discharge Constant Current (Watts at 68°F20°C)

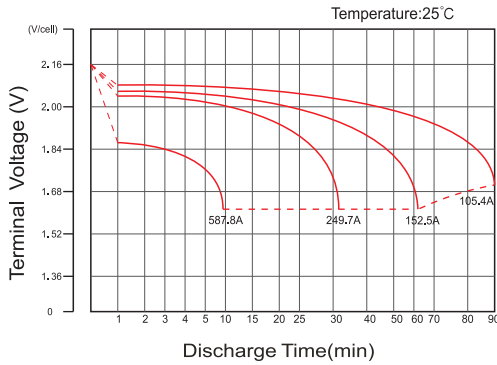
End Point Volts/Cell	5min	8min	10min	15min	20min	30min	60min	90min
1.60V	1261	1064	944	734	603	460	282	212
1.65V	1178	1007	894	703	568	443	271	204
1.70V	1143	984	872	689	552	435	267	200
1.75V	1093	946	829	665	544	428	266	198
1.80V	1043	909	787	641	535	421	264	196
1.85V	993	873	744	617	527	414	263	194



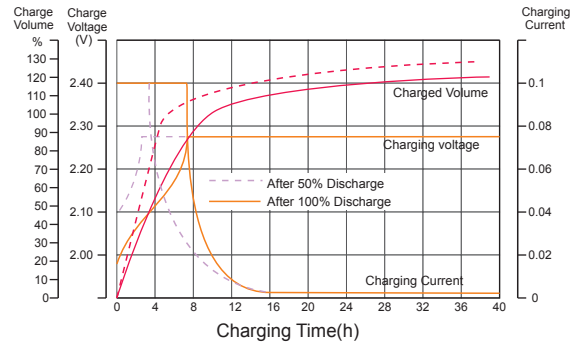
Dimensions



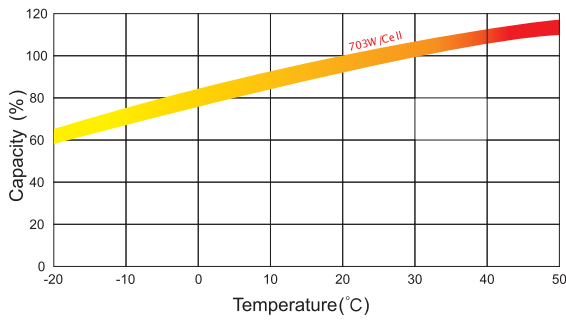
Discharge Characteristics



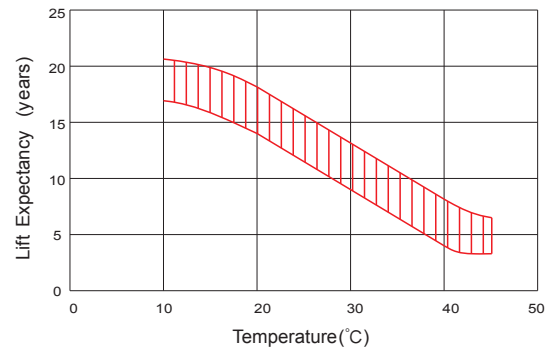
Float Charging Characteristics



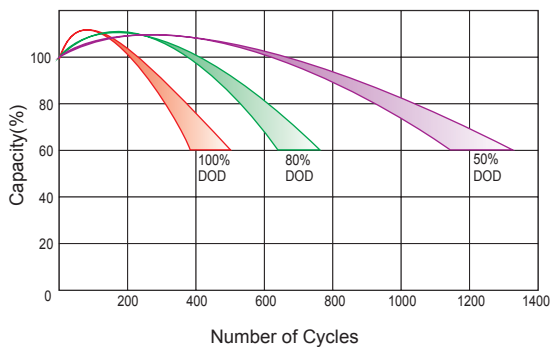
Temperature Effects in Relation to Battery Capacity



Effect of Temperature on Long Term Float Life



Cycle Life in Relation to Depth of Discharge



Self Discharge Characteristics

