



# SSB SBL 170-12HR (12V 843W)



Specification		
Nominal Voltage	12V	
Nominal Capacity (10hr / 20°C / 1.80 V/C)	843W	
	20 hour rate	150.0Ah
	10 hour rate	141.5Ah
Internal Resistance	Fully Charged battery 68°F(20°C) ≤3.8 mOhms	
Self-Discharge	3% of capacity declined per month at 20°C (average)	
	SSB series batteries may be stored for up to 6 months at 68°F(20°C) and then a freshening charge is required. For higher temperatures the time interval will be shorter.	
Dimension	Length (mm / inch)	483/ 19.0
	Width (mm / inch)	170 / 6.69
	Height (mm / inch)	241 / 9.49
	Total Height (mm / inch)	241/ 9.49
Approx. Weight (Kg / lbs)	46.0 / 101.4	
Operating Temperature Range (temporarily – see our manual)	Discharge : -20~60°C	
	Charge : -0~50°C	
	Storage : -20~60°C	
Max. Discharge Current 68°F(20°C)	1500A(5s)	
Short Circuit Current	3100A	
Charge Methods: Constant Voltage Charge 68°F(20°C)	Cycle use	2.30-2.35VPC
	Maximum charging current	0.96A
	Temperature compensation	-3mV/°C
	Standby use	2.23-2.275VPC
	Temperature compensation	-4mV/°C
Life expectancy	10~12 years at 20°C with charge voltage 2.25V/cell	

## Applications

- ◆ Absorbent Glass Mat (AGM) technology for efficient gas recombination of up to 99% and freedom from electrolyte maintenance or water adding.
- ◆ Not restricted for air transport-complies with IATA/ICAO Special Provision A67.
- ◆ UL-recognized component.
- ◆ Can be mounted in any orientation.
- ◆ Computer designed lead, calcium tin alloy grid for high power density.
- ◆ Long service life, float or cyclic applications.
- ◆ Maintenance-free operation.
- ◆ Low self discharge.
- ◆ Case and cover available in both standard and flame retardant ABS.



Conform to:  
IEC60896-21&22 and/or IEC61427

### Discharge Constant Current (Amperes at 68°F20°C)

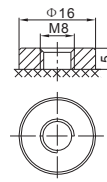
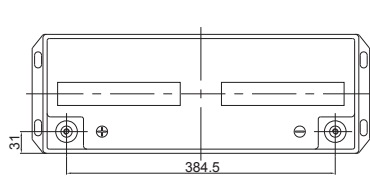
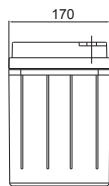
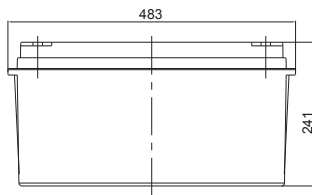
End Point Volts/Cell	5min	8min	10min	15min	20min	30min	60min	90min
1.60V	532.9	456.3	410.4	326.1	261.9	192.0	110.4	81.7
1.65V	493.1	428.1	385.1	309.1	244.3	183.0	105.2	77.8
1.70V	472.6	413.0	371.2	299.5	235.0	177.8	102.2	75.5
1.75V	446.4	392.4	348.5	285.5	228.6	172.8	100.5	73.8
1.80V	419.8	371.7	325.8	271.2	221.8	167.5	98.5	72.0
1.85V	391.8	349.5	302.0	255.8	214.1	161.3	96.1	69.8

### Discharge Constant Current (Watts at 68°F20°C)

End Point Volts/Cell	5min	8min	10min	15min	20min	30min	60min	90min
1.60V	950	826	747	597	481	354	204	152
1.65V	888	782	708	572	453	340	196	146
1.70V	861	764	690	560	441	335	193	143
1.75V	824	735	656	541	435	329	192	142
1.80V	786	706	623	521	428	324	191	140
1.85V	748	677	589	502	421	318	190	139

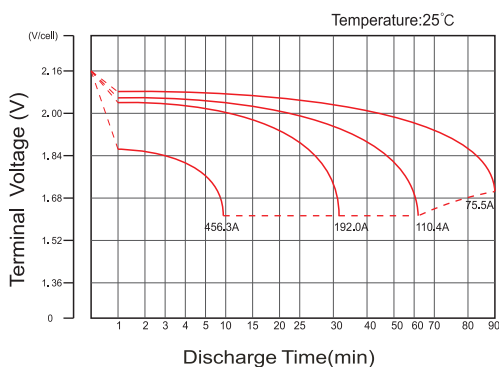


# Dimensions

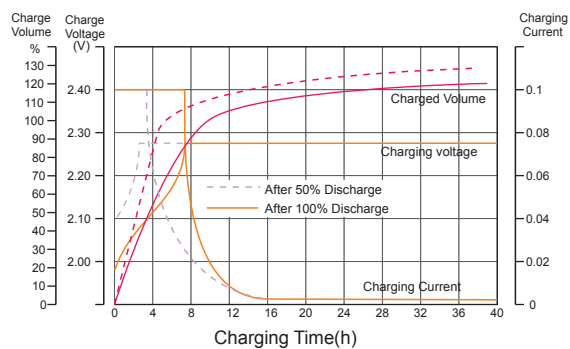


F12 Terminal

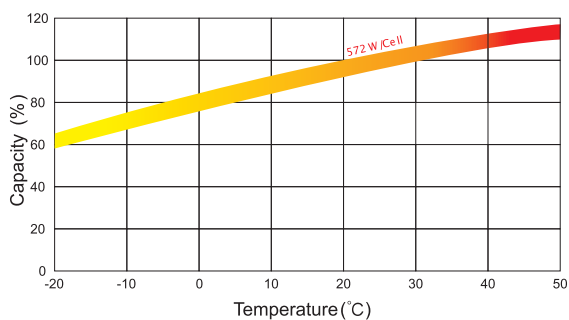
## Discharge Characteristics



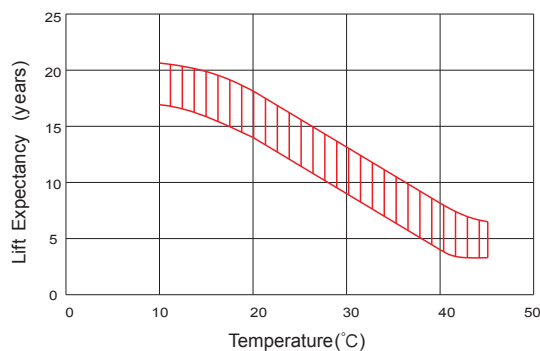
## Float Charging Characteristics



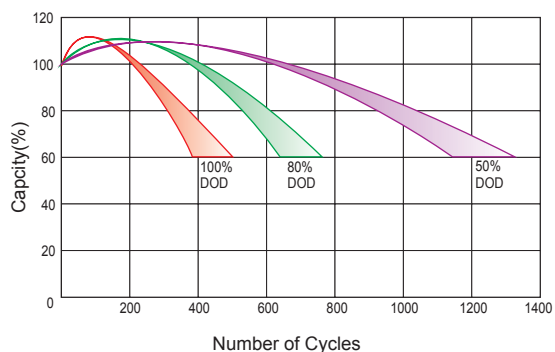
## Temperature Effects in Relation to Battery Capacity



## Effect of Temperature on Long Term Float Life



## Cycle Life in Relation to Depth of Discharge



## Self Discharge Characteristics

