



SSB SBL 125-12HR (12V 574W)



Specification		
Nominal Voltage	12V	
Nominal Capacity (10hr / 20°C / 1.80 V/C)	574W	
	20 hour rate	100.0Ah
	10 hour rate	94.4Ah
Internal Resistance	Fully Charged battery 68°F(20°C) ≤4.0 mOhms	
Self-Discharge	3% of capacity declined per month at 20°C (average)	
Dimension	SSB series batteries may be stored for up to 6 months at 68°F(20°C) and then a freshening charge is required. For higher temperatures the time interval will be shorter.	
	Length (mm / inch)	328 / 12.9
	Width (mm / inch)	172 / 6.77
	Height (mm / inch)	215 / 8.46
	Total Height (mm / inch)	220 / 8.66
Approx. Weight (Kg / lbs)	32.0 / 70.5	
Operating Temperature Range (temporarily – see our manual)	Discharge : -20~60°C	
	Charge : -0~50°C	
	Storage : -20~60°C	
Max. Discharge Current 68°F(20°C)	1000A(5s)	
Short Circuit Current	2350A	
Charge Methods: Constant Voltage Charge 68°F(20°C)	Cycle use	2.30-2.35VPC
	Maximum charging current	0.96A
	Temperature compensation	-3mV/°C
	Standby use	2.23-2.275VPC
Life expectancy	Temperature compensation	-4mV/°C
	10~12 years at 20°C with charge voltage 2.25V/cell	

Applications

- ◆ Absorbent Glass Mat (AGM) technology for efficient gas recombination of up to 99% and freedom from electrolyte maintenance or water adding.
- ◆ Not restricted for air transport-complies with IATA/ICAO Special Provision A67.
- ◆ UL-recognized component.
- ◆ Can be mounted in any orientation.
- ◆ Computer designed lead, calcium tin alloy grid for high power density.
- ◆ Long service life, float or cyclic applications.
- ◆ Maintenance-free operation.
- ◆ Low self discharge.
- ◆ Case and cover available in both standard and flame retardant ABS.



Conform to:
IEC60896-21&22 and/or IEC61427

Discharge Constant Current (Amperes at 68°F20°C)

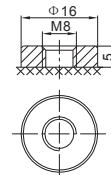
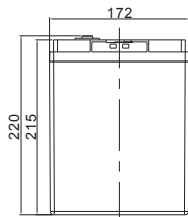
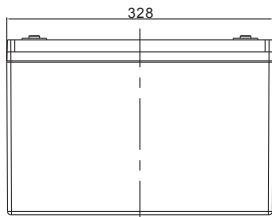
End Point Volts/Cell	5min	8min	10min	15min	20min	30min	60min	90min
1.60V	355.3	304.2	273.6	217.4	174.6	128.0	73.6	54.5
1.65V	328.7	285.4	256.7	206.0	162.9	122.0	70.1	51.9
1.70V	315.1	275.3	247.5	199.7	156.7	118.6	68.1	50.3
1.75V	297.6	261.6	232.4	190.3	152.4	115.2	67.0	49.2
1.80V	279.9	247.8	217.2	180.8	147.9	111.7	65.7	48.0
1.85V	261.2	233.0	201.3	170.5	142.7	107.6	64.1	46.6

Discharge Constant Current (Watts at 68°F20°C)

End Point Volts/Cell	5min	8min	10min	15min	20min	30min	60min	90min
1.60V	634	551	498	398	321	236	136	101
1.65V	592	521	472	381	302	227	131	97.3
1.70V	574	509	460	374	294	223	129	95.4
1.75V	549	490	438	361	290	220	128	94.5
1.80V	524	471	415	348	285	216	127	93.5
1.85V	599	452	393	334	281	212	127	92.6

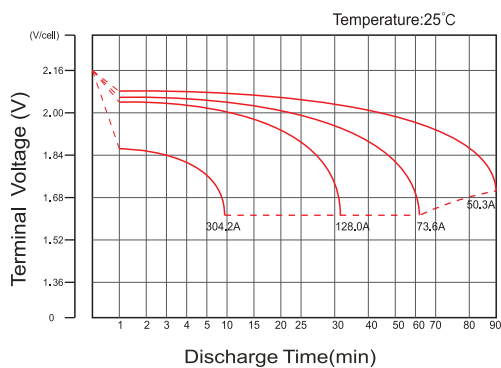


Dimensions

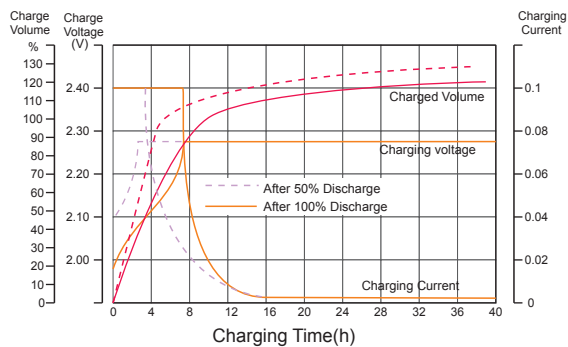


F12 Terminal

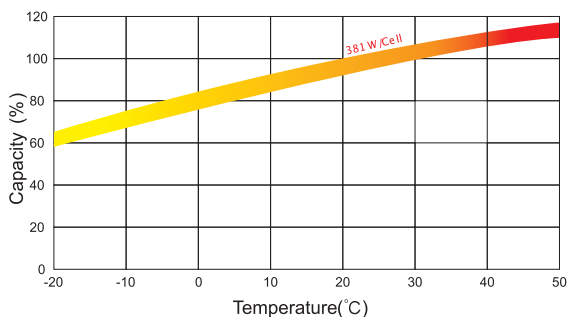
Discharge Characteristics



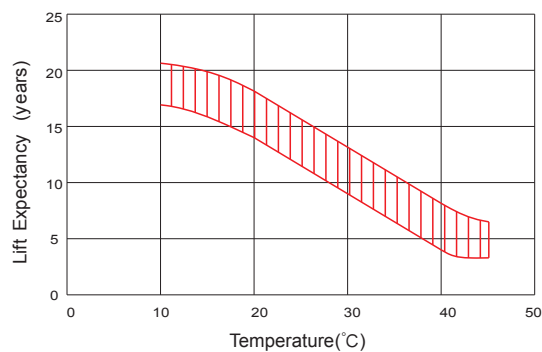
Float Charging Characteristics



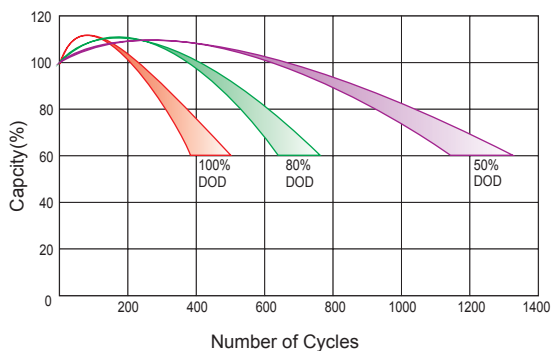
Temperature Effects in Relation to Battery Capacity



Effect of Temperature on Long Term Float Life



Cycle Life in Relation to Depth of Discharge



Self Discharge Characteristics

